

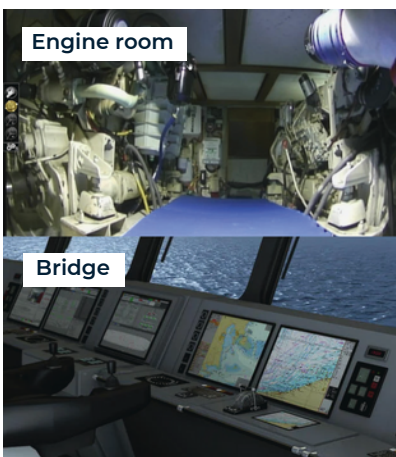
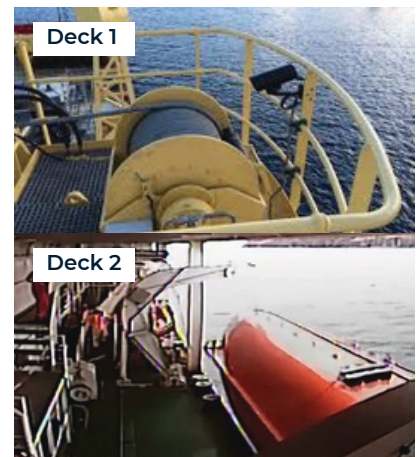
Discover unparalleled insight and visibility into the daily operations of your vessels.



OceanEye represents the cutting-edge in monitoring solutions for vessel owners seeking comprehensive visibility to ensure safety and productivity onboard. With its array of unique features, the system is tailored to assist vessel owners in averting accidents, mitigating insurance claims, and addressing crew concerns effectively.

Advantages of OceanEye Monitoring

- ✓ Real time access to onboard footage
- ✓ Immediate video evidence for any insurance claims
- ✓ Seamless access to all video recordings without crew intervention
- ✓ Diverse range of video camera options with the flexibility of integrating existing cameras
- ✓ Minimize onboard incidents
- ✓ Enhance operational efficiency



Unique Features

- ✓ Recording (highly compressed) for upto 3 days on secure cloud, accessible even in case of damage of the system on board
- ✓ Effortlessly share or download video clips with key stake holders including management, insurance, government agencies, etc.
- ✓ Videos tagged with geolocation
- ✓ Tailored user access levels to suit different organizational roles
- ✓ Seamless integration of existing cameras

NVR

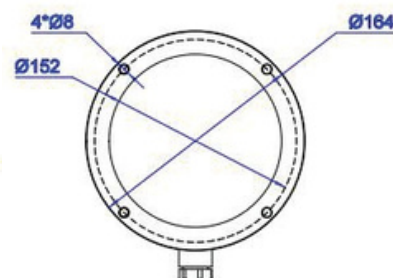
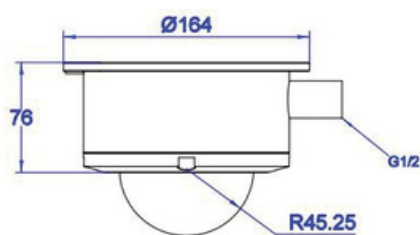
The OceanEye Network Video Recorder (NVR) features a powerful Intel® Core™ i5 6-core/12-thread processor. Housed in a sleek and robust mini-chassis with tamper-proof design, the server boasts four 3.5" or SSD hot-swappable hard drive trays for added convenience and versatility.

- ✓ Supports three independent monitors via HDMI, DisplayPort and VGA
- ✓ NVIDIA® Quadro RTX™ GPU
- ✓ 2D/3D rendering (optional)
- ✓ Two Ethernet ports

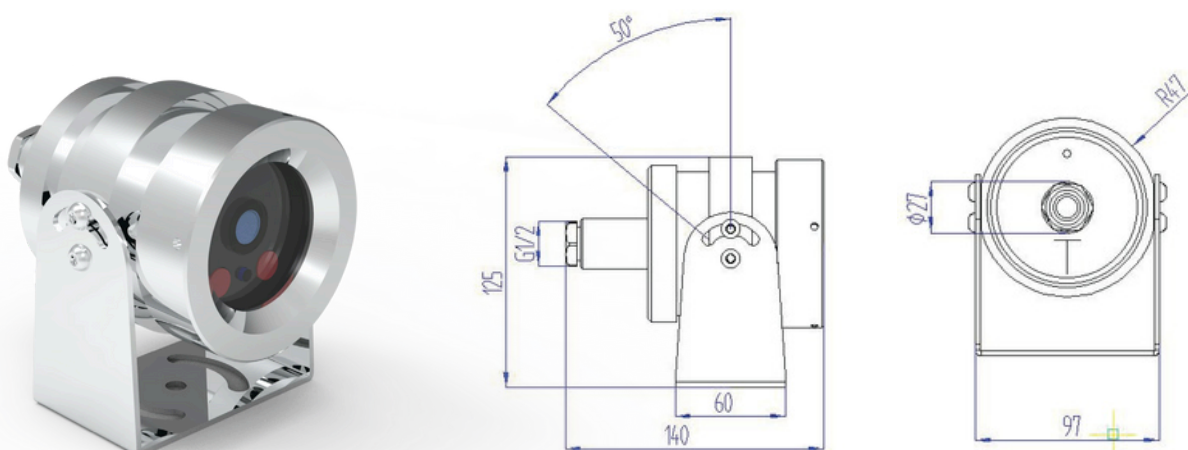


Specifications

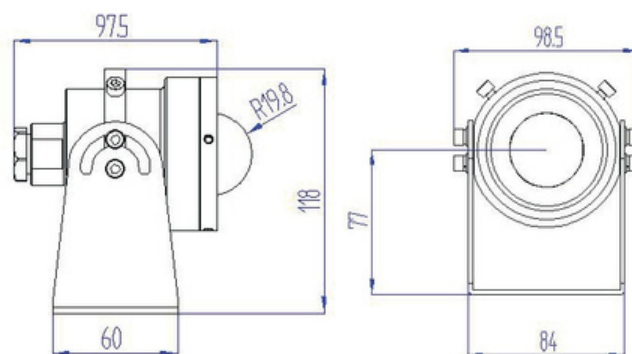
- Chassis Rugged mini case
- 3.5" or SSD removable hard drive tray x4
- 210 x 240 x 240 mm (8.27"x 9.45"x 9.45")
- CPU LGA1200socket
- Intel® Core™ i5 processor(6-core/12-thread, 3.5GHz, 4MB Cache)
- Memory DDR4 SDIMM 3200/ 4G RAM x2(dual channel)
- Chipset Intel® H410
- Network Controller Intel® i211AT x1, I219V x1
- Onboard Graphics CPU integrated Intel® UHD Graphics
- System Storage M.2 PCIe 256GB Gen3x4 SSD
- SATA Controller 6Gb/s
- Connectors
 - Power switch
 - Reset switch
 - Power LED
 - HDD LED
 - Front USB 2.0 x 2
 - Display connector: HDMI x 1, DP x 1, VGA x 1
 - USB 3.0 port x 4
 - RJ-45 port x 2 (1GbE)
 - Audio jack x 2
- System Fan 120mm PWM fan x1
- PSU 1U 250W single power



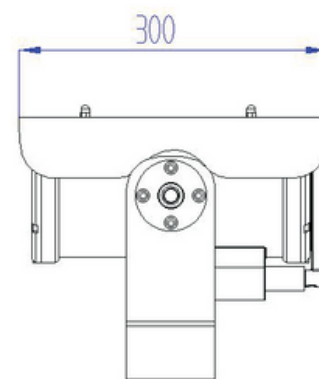
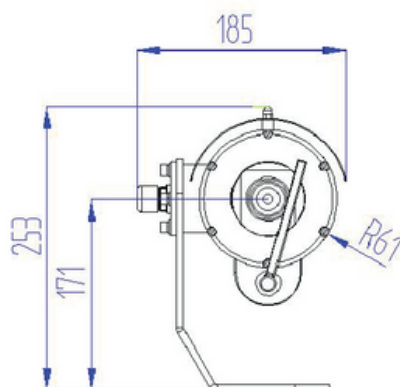
Type	MC 200
Material	Stainless Steel 316L
Protection Class	IP68
Temp. range min	-40°C
Temp. range max	+60°C
Video	IP
Operational Areas	Outdoor
Mounting	Wall mounted, column, upside etc.
Wiper/IR	IR distance 30m
Pan/Tilt	Remote operated
Rotation Vertical	0-90°
Rotation Horizontal	0-355°
Resolution	2MP, 4MP etc.
Focal Length	2.8mm / 3.6mm / 4mm
Image Sensor	1/2.8" Sony 307 2MP CMOS
Min. illumination	Color: 0.05 lux@ (F1.6, AGC ON), 0 lux with IR
Functions	Anti-flicker, heartbeat, password protection, privacy mask, watermark
Voltage	DC 12V / POE power optional
Weight	≤ 3KG
Dimensions (L*W*H)	165*202*165mm
Certificates	BS EN62676-1-1-2014



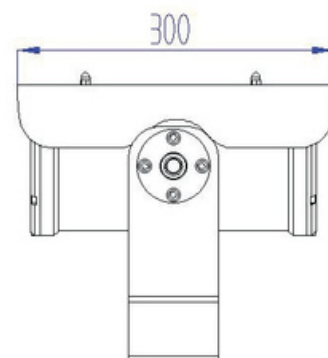
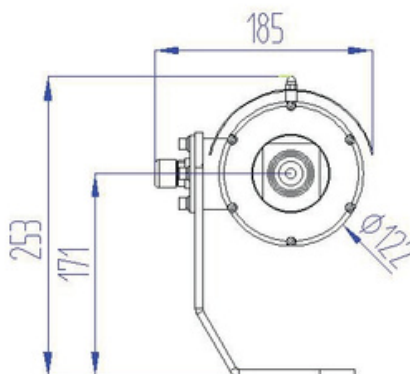
Type		MC 300
Material	Stainless Steel 316L	
Protection Class	IP68	
Temp. range min	-40°C	
Temp. range max	+60°C	
Video	IP	
Operational Areas	Outdoor	
Mounting	Wall mounted, column, upside etc.	
Wiper/IR	IR distance 15m	
Field of View	120° / 90°	
Resolution	2MP, 4MP, 8MP etc.	
Focal Length	2.8mm / 4mm	
Image Sensor	1/2.8" Progressive Scan CMOS	
Min. illumination	Color: 0.001 lux@ (F1.7, AGC ON); B/W:0.005lux @(F1.5, ACG ON)	
Functions	Anti-flicker, heartbeat, password protection, privacy mask, watermark	
Voltage	DC 12V / POE power optional	
Weight	≤ 2.4KG	
Dimensions (L*W*H)	141*104*124mm	
Certificates	BS EN62676-1-1-2014	



Type		MC 400
Material		Stainless Steel 316L
Protection Class		IP68
Temp. range min		-40°C
Temp. range max		+60°C
Video		IP
Operational Areas		Outdoor
Mounting		Wall mounted, column, upside etc.
Black light level		Support
Field of View		170° / 130°
Resolution		2MP, 4MP, 8MP etc.
Focal Length		1.8mm / 2.5mm
Image Sensor		1/2.8" Progressive Scan CMOS
Min. illumination	Color: 0.001 lux@ (F1.7, AGC ON); B/W:0.005lux @(F1.5, ACG ON)	
Functions	Anti-flicker, heartbeat, password protection, privacy mask, watermark	
Voltage		DC 12V / POE power optional
Weight		≤ 1.4KG
Dimensions (L*W*H)		114*84*118mm
Certificates		BS EN62676-1-1-2014



Type	MC 801
Material	Stainless Steel 316L
Protection Class	IP68
Temp. range min	-40°C
Temp. range max	+60°C
Video	IP
Operational Areas	Outdoor
Mounting	Wall mounted, column, upside etc.
Wiper/IR	Smart Wiper
Shutter	Automatic / manual, 1-1 / 100000s
Resolution	2MP, 4MP, 8MP etc.
Zoom	4X/18X/22X/33X etc
Image Sensor	1/2.9" Progressive CMOS image sensor
Min. illumination	Color: 0.005 lux@ (F1.78, AGC ON); 0.004 lux (F1.78, AGC ON, black and white)
Functions	Motion detection, occlusion detection, and sound detection
Voltage	DC 12V / POE+ / AC110V-240V power optional
Weight	≤ 7.7KG
Dimensions (L*W*H)	300*182*223mm
Certificates	BS EN62676-1-1-2014



Type	MC 802
Material	Stainless Steel 316L
Protection Class	IP68
Temp. range min	-40°C
Temp. range max	+60°C
Video	IP
Operational Areas	Outdoor
Mounting	Wall mounted, column, upside etc.
Iris diaphragm	F1.78(W)-F3.73(T)
Shutter	Automatic / manual, 1-1 / 100000s
Resolution	2MP, 4MP, 8MP etc.
Zoom	4X/18X/22X/33X etc
Image Sensor	1/2.9" Progressive CMOS image sensor
Min. illumination	Color: 0.005 lux@ (F1.78, AGC ON); 0.004 lux (F1.78,AGC ON, black and white)
Functions	Motion detection, occlusion detection, and sound detection
Voltage	DC 12V / POE+ / AC110V-240V power optional
Weight	≤ 6.9KG
Dimensions (L*W*H)	300*182*223mm
Certificates	BS EN62676-1-1-2014